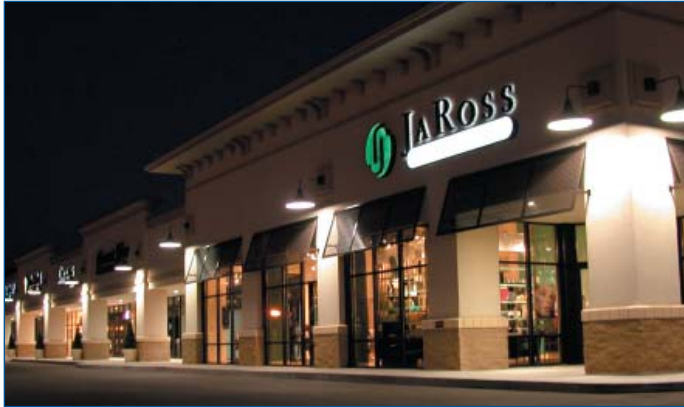


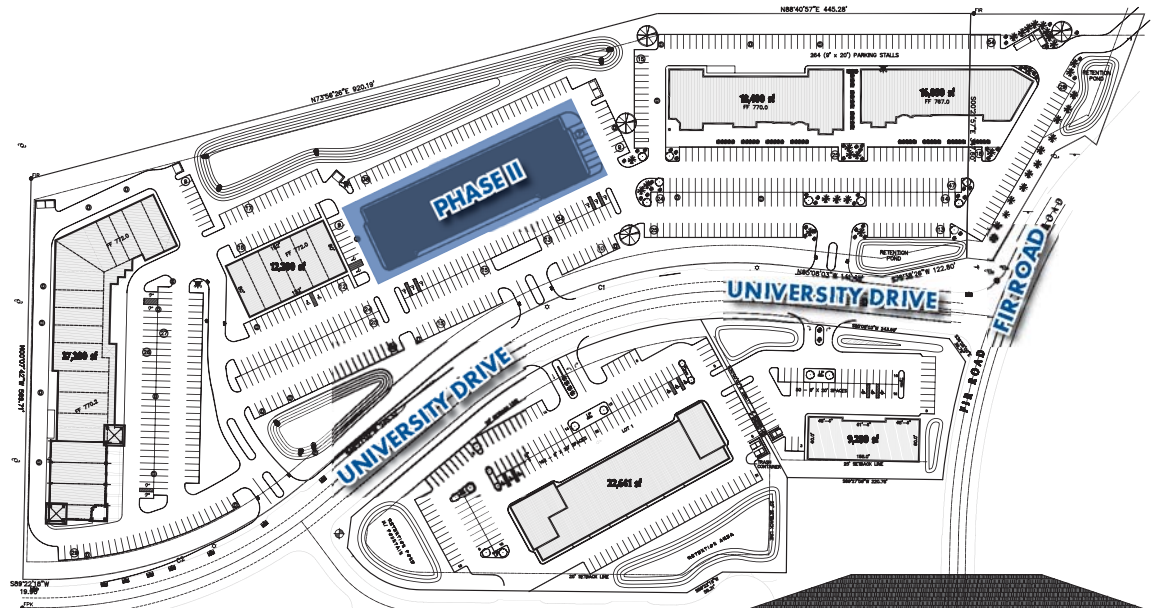
# City Plaza, Mishawaka

## Upscale Destination Retail & Restaurant Plaza



New Construction! City Plaza is an upscale destination retail and restaurant plaza located in the University Park Retail Trade Area. Currently leasing suites at Two City Plaza, the second phase of this 130,000-square-foot development. Situated along the primary eastern corridor into the trade area, City Plaza offers unmatched visibility, tenant synergies and access. Tenants at One City Plaza include JaRoss Salon and Day Spa, 4 Her boutique, John Clifford Imports, Visions, Wine Down Bistro & Bar, Somerset House and Cooking With Class.

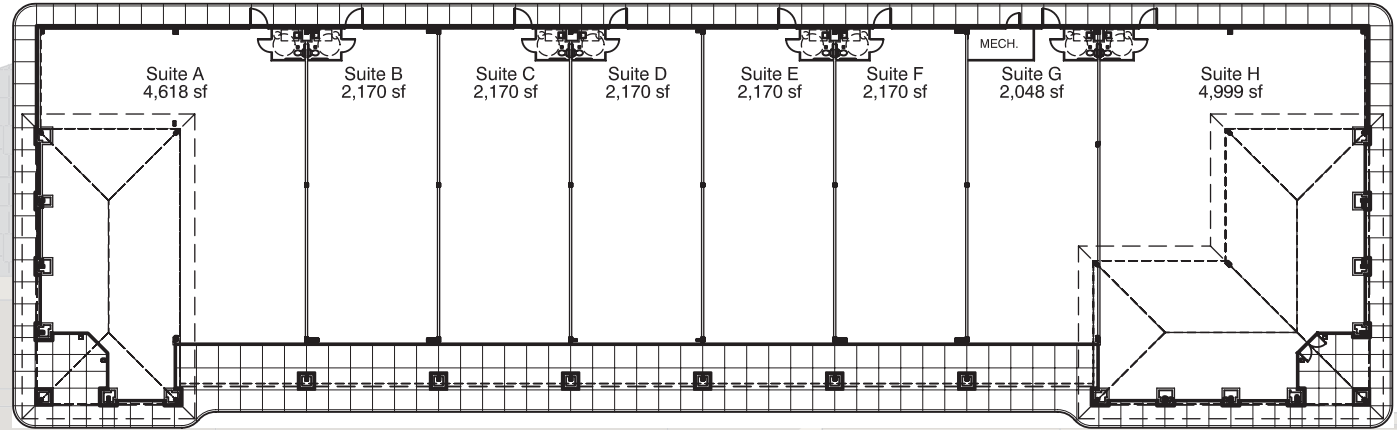
**Flexible sizes, facades and floorplates**  
will be available in Two City Plaza and future buildings.



# City Plaza, Mishawaka

## Now Leasing Phase II at Two City Plaza

**Two City Plaza  
Suites Currently  
Leasing  
from 1,700 SF  
\$19 - \$23 PSF**



**For more information, contact:**

**Brad Toothaker**

**brad.toothaker@cbre.com**

**Regina Emberton, CCIM**

**regina.emberton@cbre.com**

**Autumn Aggeler**

**autumn.aggeler@cbre.com**

**574.237.6000**

**www.cbre.com/cityplaza**

### Area Information

**The ten-county South Bend Designated Market Area is one of the state's top markets with a population of 879,000; 320,000 households; a total Effective Buying Income of over \$14 billion.**



**CBRE**  
CB RICHARD ELLIS

© 2006 CB Richard Ellis South Bend, All Rights Reserved. We obtained the information above from sources we believe to be reliable. However, we have not verified its accuracy and make no guarantee, warranty or representation about it. It is submitted subject to the possibility of errors, omissions, change of price, rental or other conditions, prior sale, lease or financing, or withdrawal without notice. We include projections, opinions, assumptions or estimates for example only, and they may not represent current or future performance of the property. You and your tax and legal advisors should conduct your own investigation of the property and transaction.

**RANS**  
DEVELOPMENT